



CONNECTORS

INDUSTRIAL CATALOGUE

2020 CATALOGUE

GASFEDERN – GAS SPRING – MOLLA A GAS



Discover
the potential

UNICERT
ISO 9001:2015



About Our Company

From Tradition
to Innovation

TGS started its industry adventure in early 70s by the producon of machining products for gas springs and various fields of industry. Our early gas spring producon steps started in 1992.

Day afer day we improved our manufacturing technologies and machinery equipments and caught world standards. In 2008 we started exporting our products to european countries and established our export company Tunatek Ltd. Co. for organizing our all export operations.

More than a quarter century of experience in gas spring producon ensures us self-confidence to provide our products all high level markets. Today we manufacture 5 different series in steel and stainless steel materials and dozens of different functions. Customers from about 50 countries and dozen of different industrial sectors rely on different kinds of gas springs made by TGS.



Quality Policy



All our products are designed, manufactured and delivered according to the most strict quality standards. Our experienced and specially trained employees monitor the adherence to our quality criteria in every phase of the production process. Tunalift gas springs are manufactured with the highest quality, environmentally friendly materials.

We are certified in accordance with DIN ISO 9001:2015. Our quality program starts with implementing strict quality controls on our purchase transactions. Permanent quality is guaranteed due to the uncompromisingly monitoring of raw materials, an aggressive testing program and a redundant quality control program throughout the production process.

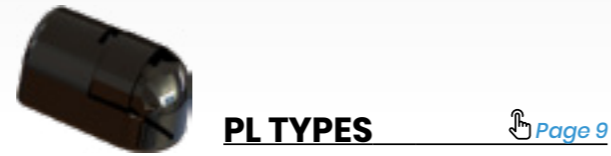
TGS products are continuously tested to ensure reliability, long life and over all product safety for your highest satisfaction. Using our test and development laboratory, products and technology are constantly being improved.



BALL SOCKET INDEX



BA TYPES [Page 8](#)



PL TYPES [Page 9](#)



PLE TYPES [Page 9](#)



PLA TYPES [Page 9](#)



P TYPES [Page 10](#)



Q TYPES [Page 10](#)

BALL JOINT INDEX

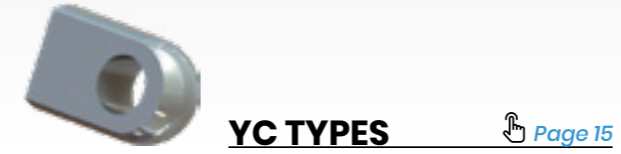


BJ TYPES [Page 12](#)

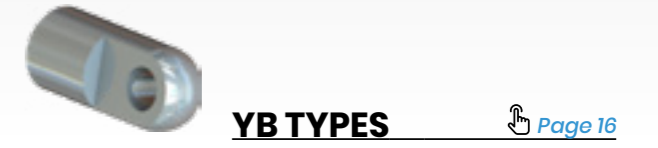


PJ/QJ TYPES [Page 13](#)

EYE INDEX



YC TYPES [Page 15](#)



YB TYPES [Page 16](#)



YA TYPES [Page 17](#)



CA TYPES [Page 17](#)



ZT/ZY TYPES [Page 18](#)



MG TYPES [Page 19](#)

CLEVIS INDEX



FA TYPES [Page 21](#)



FAC TYPES [Page 22](#)

ACCESSORY INDEX



PA TYPES [Page 24](#)



DS TYPES [Page 25](#)



N TYPES [Page 26](#)



CF TYPES [Page 27](#)



MJ TYPES [Page 28](#)

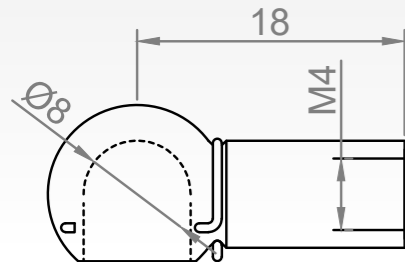
BALL SOCKET

TGS Ball Socket Connectors are made from free cutting steel 11SMnPb30+C (DIN 1.0718) which is available with 4 surface treatments. Additional to steel sockets we also offer plastic options (PA66 GF30) with brass thread. Please check our T-INOX Catalogue for Stainless versions.

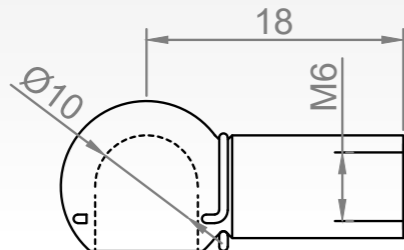




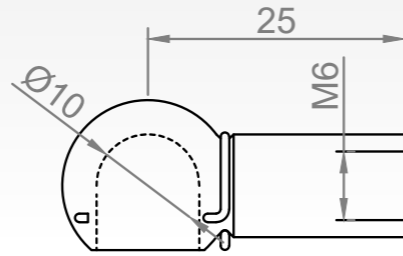
TYPE: BA BALL SOCKET CONNECTORS



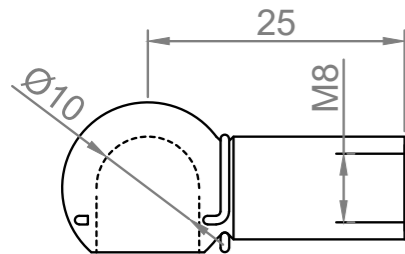
FEATURES		B402
Material Information	Steel ,DIN 1.0718	
Surface Treatment	Zinc plated	
Compatible With	S12	
Components	B402; DS08	
Unit Weight	0,007 KG	



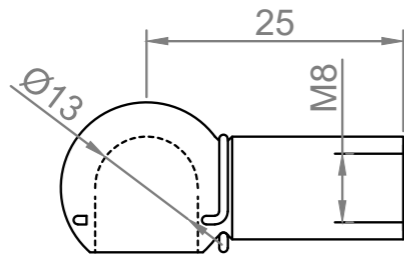
FEATURES		B001
Material Information	Steel ,DIN 1.0718	
Surface Treatment	Zinc plated	
Compatible With	S15, S18, D15, D18, W18	
Components	B001; DS10	
Unit Weight	0,014 KG	



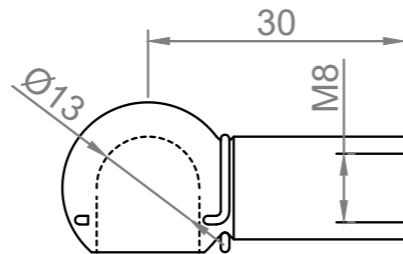
FEATURES		B002
Material Information	Steel ,DIN 1.0718	
Surface Treatment	Zinc plated	
Compatible With	S15, S18, D15, D18, W18	
Components	B002; DS10	
Unit Weight	0,016 KG	



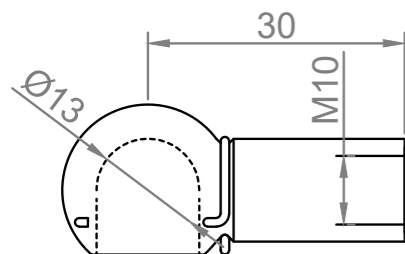
FEATURES		B005
Material Information	Steel ,DIN 1.0718	
Surface Treatment	Zinc plated	
Compatible With	S18, S21, W22, D21	
Components	B005; DS10	
Unit Weight	0,013 KG	



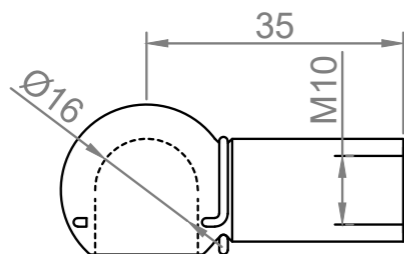
FEATURES		B006
Material Information	Steel ,DIN 1.0718	
Surface Treatment	Zinc plated	
Compatible With	S21, S22, W22	
Components	B006; DS13	
Unit Weight	0,026 KG	



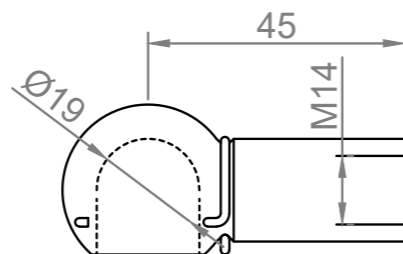
FEATURES		B007
Material Information	Steel ,DIN 1.0718	
Surface Treatment	Zinc plated	
Compatible With	S21, S22, W22	
Components	B007; DS13	
Unit Weight	0,029 KG	



FEATURES		B074
Material Information	Steel ,DIN 1.0718	
Surface Treatment	Zinc plated	
Compatible With	S27, S28	
Components	B074; DS13	
Unit Weight	0,030 KG	



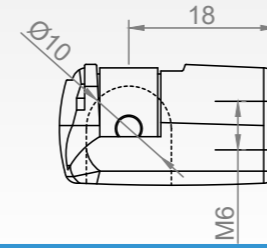
FEATURES		B125
Material Information	Steel ,DIN 1.0718	
Surface Treatment	Zinc plated	
Compatible With	S28	
Components	B125; DS16	
Unit Weight	0,057 KG	



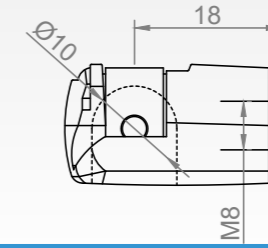
FEATURES		B401
Material Information	Steel ,DIN 1.0718	
Surface Treatment	Zinc plated	
Compatible With	S40	
Components	B401; DS19	
Unit Weight	0,125 KG	



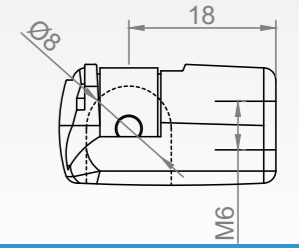
TYPE: PL PLASTIC BALL SOCKET



FEATURES		PL01
Body Material	Plastic-PA66 GF30	
Inside	Clip: CK67, Thread: Brass	
Compatible With	S15, S18, D15, D18, W18	
Components	PL01	
Unit Weight	0,010 KG	



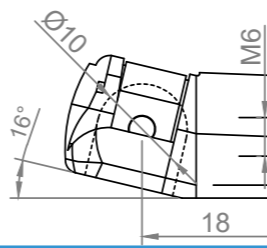
FEATURES		PL02
Body Material	Plastic-PA66 GF30	
Inside	Clip: CK67, Thread: Brass	
Compatible With	S21, S22, W22	
Components	PL02	
Unit Weight	0,010 KG	



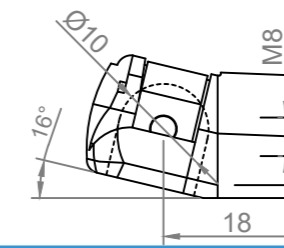
FEATURES		PL05
Body Material	Plastic-PA66 GF30	
Inside	Clip: CK67, Thread: Brass	
Compatible With	S15, S18, D15, D18, W18	
Components	PL05	
Unit Weight	0,007 KG	



TYPE: PLA PLASTIC BALL SOCKET



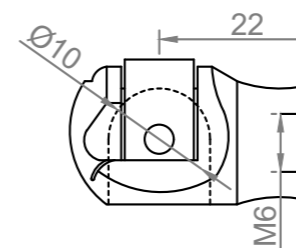
FEATURES		PLA1
Body Material	Plastic-PA66 GF30	
Inside	Clip: CK67, Thread: Brass	
Compatible With	S15, S18, D15, D18, W18	
Components	PLA1	
Unit Weight	0,010 KG	



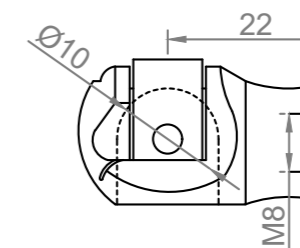
FEATURES		PLA2
Body Material	Plastic-PA66 GF30	
Inside	Clip: CK67, Thread: Brass	
Compatible With	S21, S22, W22	
Components	PLA2	
Unit Weight	0,010 KG	



TYPE: PLE PLASTIC BALL SOCKET



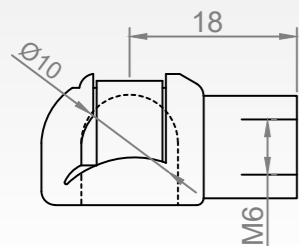
FEATURES		PLE1
Body Material	Plastic-PA66 GF30	
Inside	Clip: CK67, Thread: Brass	
Compatible With	S15, S18, D15, D18, W18	
Components	PLE1	
Unit Weight	0,009 KG	



FEATURES		PLE2
Body Material	Plastic-PA66 GF30	
Inside	Clip: CK67, Thread: Brass	
Compatible With	S21, S22, W22	
Components	PLE2	
Unit Weight	0,010 KG	

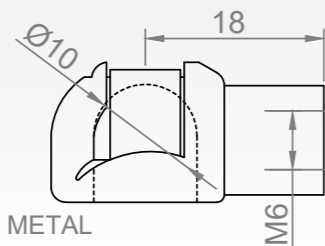


TYPE: P / Q
PLASTIC / METAL BALL SOCKET



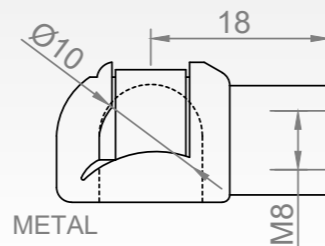
FEATURES P001

Body Material	Plastic-PA66 GF30
Inside	Clip: CK67, Thread: Brass
Compatible With	S15, S18, D15, D18, W18
Components	P001
Unit Weight	0,004 KG



FEATURES Q001

Material Information	Steel, DIN 1.0718
Surface Treatment	Zinc Plated
Compatible With	S15, S18, D15, D18, W18
Components	Q001
Unit Weight	0,014 KG



FEATURES Q002

Material Information	Steel, DIN 1.0718
Surface Treatment	Zinc Plated
Compatible With	S15, S18, D15, D18, W18
Components	Q002
Unit Weight	0,013 KG

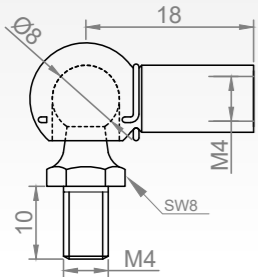
BALL JOINT

TGS Ball Joint Connectors are made from free cutting steel 11SMnPb30+C (DIN 1.0718) which is available with 4 surface treatments. Additional to steel sockets we also offer plastic options (PA66 GF30) with brass thread and steel studs. Please check our T-INOX Catalogue for Stainless versions.



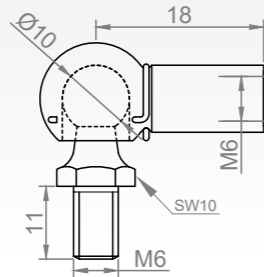


TYPE: BJ BALL JOINT CONNECTORS



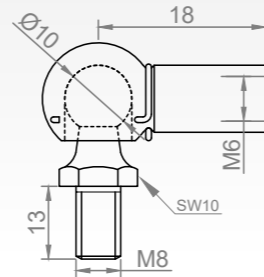
FEATURES **J001**

Material Information	Steel ,DIN 1.0718
Surface Treatment	Zinc plated
Compatible With	S12
Components	DS08, PA42, B402
Unit Weight	0,011 KG



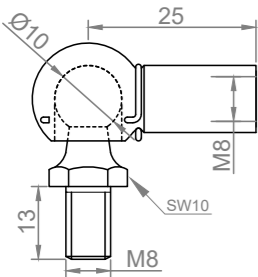
FEATURES **J032**

Material Information	Steel ,DIN 1.0718
Surface Treatment	Zinc plated
Compatible With	S15, S18, D15, D18, W18
Components	B001; DS10; PA01
Unit Weight	0,029 KG



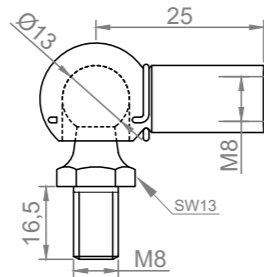
FEATURES **J033**

Material Information	Steel ,DIN 1.0718
Surface Treatment	Zinc plated
Compatible With	S15, S18
Components	B001; DS10; PA45
Unit Weight	0,029 KG



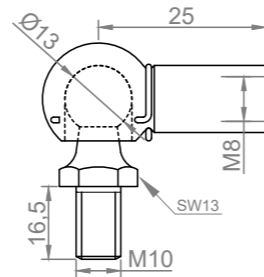
FEATURES **J083**

Material Information	Steel ,DIN 1.0718
Surface Treatment	Zinc plated
Compatible With	S18, S21, W22, D21
Components	B005; DS10; PA45
Unit Weight	0,034 KG



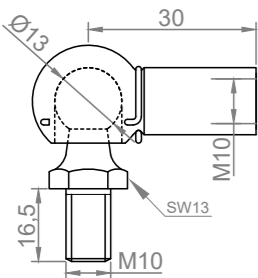
FEATURES **J113**

Material Information	Steel ,DIN 1.0718
Surface Treatment	Zinc plated
Compatible With	S21, S22, W22
Components	B006; DS13; PA54
Unit Weight	0,049 KG



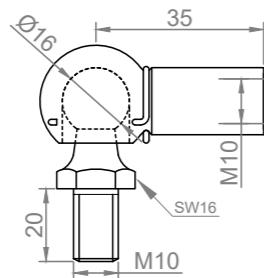
FEATURES **J174**

Material Information	Steel ,DIN 1.0718
Surface Treatment	Zinc plated
Compatible With	S21, S22, W22
Components	B006; DS13; PA55
Unit Weight	0,049 KG



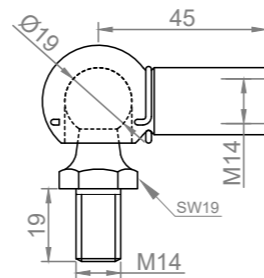
FEATURES **J173**

Material Information	Steel ,DIN 1.0718
Surface Treatment	Zinc plated
Compatible With	S27, S28
Components	B074; DS13; PA55
Unit Weight	0,054 KG



FEATURES **J153**

Material Information	Steel ,DIN 1.0718
Surface Treatment	Zinc plated
Compatible With	S28
Components	B125; DS16; PA67
Unit Weight	0,102 KG

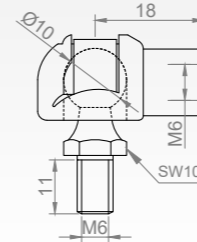


FEATURES **J180**

Material Information	Steel ,DIN 1.0718
Surface Treatment	Zinc plated
Compatible With	S40
Components	B401; DS19
Unit Weight	0,219KG

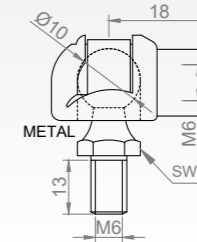


TYPE: PJ / QJ PLASTIC / METAL BALL JOINT



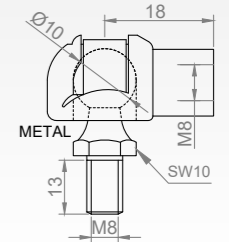
FEATURES **P010**

Body Material	Plastic-PA66 GF30
Inside	Clip: CK67, Thread: Brass
Compatible With	S15, S18
Components	P001, PA01
Unit Weight	0,008 KG



FEATURES **Q011**

Material Information	Steel ,DIN 1.0718
Surface Treatment	Zinc Plated
Compatible With	S15, S18
Components	Q001, PA14
Unit Weight	0,014 KG



FEATURES **Q023**

Material Information	Steel ,DIN 1.0718
Surface Treatment	Zinc Plated
Compatible With	S18, S21, S22, S26, S32
Components	Q002, PA03
Unit Weight	0,014 KG

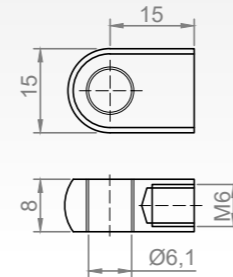


TYPE: YC

EYE CONNECTORS

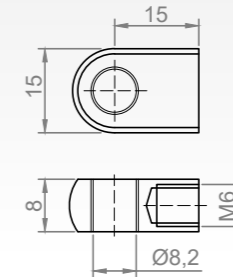
EYE FITTINGS

TGS Eye Connectors are made from free cutting steel 11SMnPb30+C (DIN 1.0718) which is available with 4 surface treatments. Please check our T-INOX Catalogue for Stainless versions.



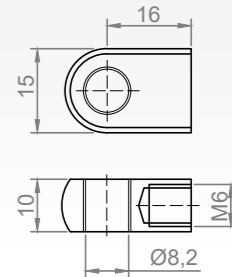
FEATURES Y016

Material Information	Steel, DIN 1.0718
Surface Treatment	Zinc plated
Compatible With	S15, S18, D15, D18, W18
Components	Y016
Unit Weight	0,014 KG



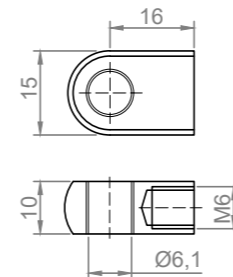
FEATURES Y017

Material Information	Steel, DIN 1.0718
Surface Treatment	Zinc plated
Compatible With	S15, S18, D15, D18, W18
Components	Y017
Unit Weight	0,014 KG



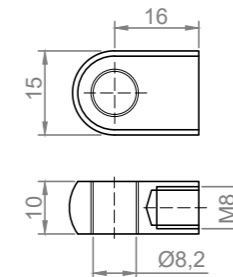
FEATURES Y019

Material Information	Steel, DIN 1.0718
Surface Treatment	Zinc plated
Compatible With	S15, S18, D15, D18, W18
Components	Y019
Unit Weight	0,016 KG



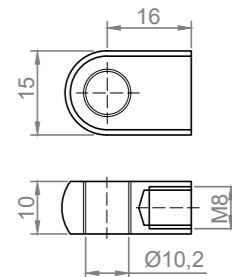
FEATURES Y524

Material Information	Steel, DIN 1.0718
Surface Treatment	Zinc plated
Compatible With	S15, S18, D15, D18, W18
Components	Y524
Unit Weight	0,016KG



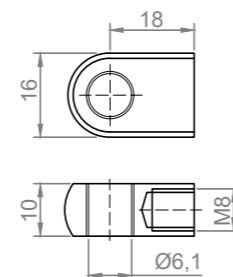
FEATURES Y009

Material Information	Steel, DIN 1.0718
Surface Treatment	Zinc plated
Compatible With	S21, S22, W22
Components	Y009
Unit Weight	0,016KG



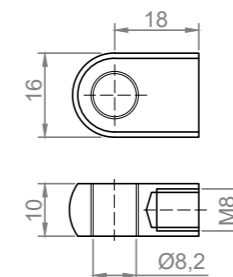
FEATURES Y010

Material Information	Steel, DIN 1.0718
Surface Treatment	Zinc plated
Compatible With	S21, S22, W22
Components	Y019
Unit Weight	0,016KG



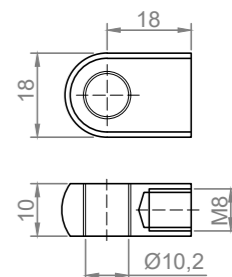
FEATURES Y540

Material Information	Steel, DIN 1.0718
Surface Treatment	Zinc plated
Compatible With	S18, S21, S22, W18, W22, D18, D21
Components	Y540
Unit Weight	0,019KG



FEATURES Y541

Material Information	Steel, DIN 1.0718
Surface Treatment	Zinc plated
Compatible With	S18, S21, S22, W18, W22, D18, D21
Components	Y541
Unit Weight	0,019KG

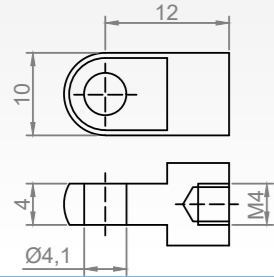


FEATURES Y542

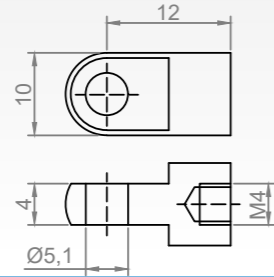
Material Information	Steel, DIN 1.0718
Surface Treatment	Zinc plated
Compatible With	S18, S21, S22, W18, W22, D18, D21
Components	Y542
Unit Weight	0,020KG



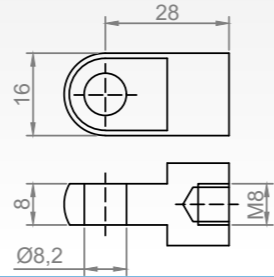
TYPE: YB EYE CONNECTORS



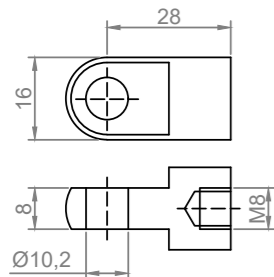
FEATURES		Y069
Material Information	Steel	DIN 1.0718
Surface Treatment	Zinc plated	
Compatible With	S12	
Components	Y069	
Unit Weight	0,007 KG	



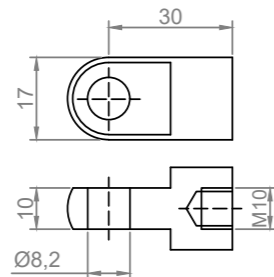
FEATURES		Y104
Material Information	Steel	DIN 1.0718
Surface Treatment	Zinc plated	
Compatible With	S12	
Components	Y104	
Unit Weight	0,007 KG	



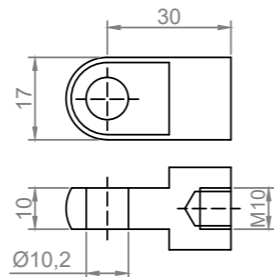
FEATURES		Y023
Material Information	Steel	DIN 1.0718
Surface Treatment	Zinc plated	
Compatible With	S21, S22, W22	
Components	Y023	
Unit Weight	0,023 KG	



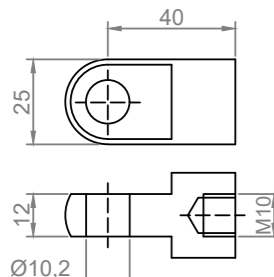
FEATURES		Y024
Material Information	Steel	DIN 1.0718
Surface Treatment	Zinc plated	
Compatible With	S21, S22, W22	
Components	Y024	
Unit Weight	0,023KG	



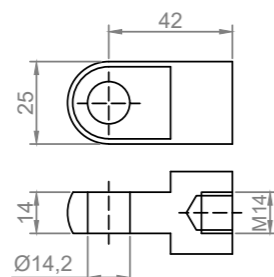
FEATURES		Y038
Material Information	Steel	DIN 1.0718
Surface Treatment	Zinc plated	
Compatible With	S21, S22, S26, S27, S28	
Components	Y038	
Unit Weight	0,040KG	



FEATURES		Y039
Material Information	Steel	DIN 1.0718
Surface Treatment	Zinc plated	
Compatible With	S21, S22, S26, S27, S28	
Components	Y039	
Unit Weight	0,040KG	



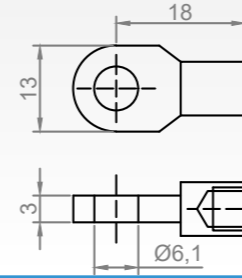
FEATURES		Y048
Material Information	Steel	DIN 1.0718
Surface Treatment	Zinc plated	
Compatible With	S21, S22, S26, S27, S28	
Components	Y048	
Unit Weight	0,057KG	



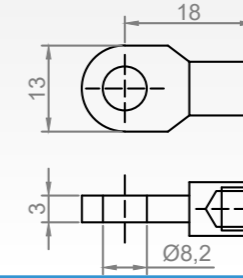
FEATURES		Y409
Material Information	Steel	DIN 1.0718
Surface Treatment	Zinc plated	
Compatible With	S40	
Components	Y409	
Unit Weight	0,019KG	



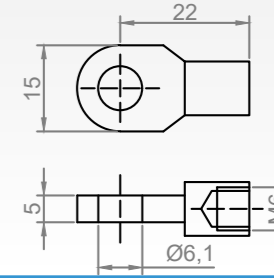
TYPE: YA EYE CONNECTORS



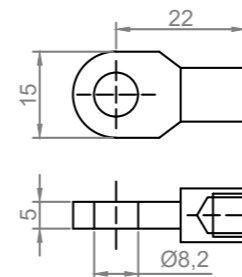
FEATURES		Y001
Material Information	Steel	DIN 1.0718
Surface Treatment	Zinc plated	
Compatible With	S15	
Components	Y001	
Unit Weight	0,008 KG	



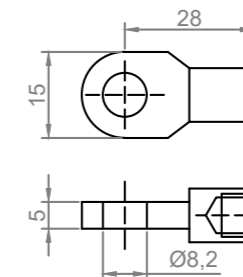
FEATURES		Y002
Material Information	Steel	DIN 1.0718
Surface Treatment	Zinc plated	
Compatible With	S15	
Components	Y002	
Unit Weight	0,008 KG	



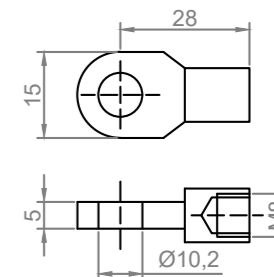
FEATURES		Y003
Material Information	Steel	DIN 1.0718
Surface Treatment	Zinc plated	
Compatible With	S15, S18	
Components	Y003	
Unit Weight	0,009 KG	



FEATURES		Y004
Material Information	Steel	DIN 1.0718
Surface Treatment	Zinc plated	
Compatible With	S21, S22, W22	
Components	Y004	
Unit Weight	0,009KG	



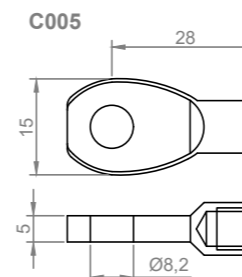
FEATURES		Y005
Material Information	Steel	DIN 1.0718
Surface Treatment	Zinc plated	
Compatible With	S21, S22, W22	
Components	Y005	
Unit Weight	0,013KG	



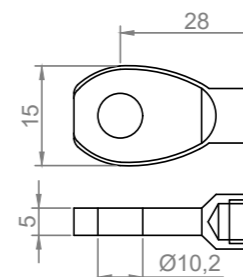
FEATURES		Y006
Material Information	Steel	DIN 1.0718
Surface Treatment	Zinc plated	
Compatible With	S21, S22, W22	
Components	Y005	
Unit Weight	0,013KG	



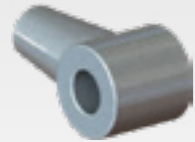
TYPE: CA EYE CONNECTORS



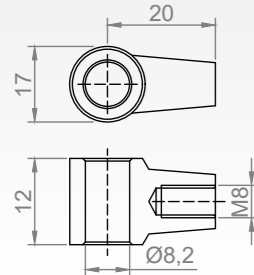
FEATURES		C005
Material Information	Steel	DIN 1.0718
Surface Treatment	Zinc plated	
Compatible With	S21, S22, W22	
Components	C005	
Unit Weight	0,016KG	



FEATURES		C006
Material Information	Steel	DIN 1.0718
Surface Treatment	Zinc plated	
Compatible With	S21, S22, W22	
Components	C006	
Unit Weight	0,016KG	

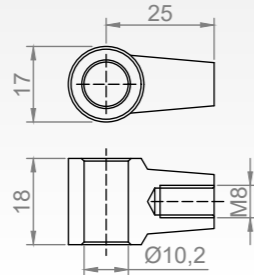


TYPE: ZY EYE CONNECTORS



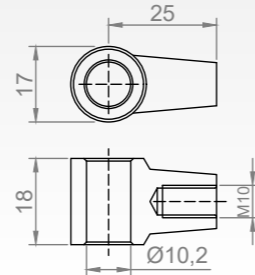
FEATURES Z08

Material Information	Zamac 5 alloy
Surface Treatment	Zinc plated
Compatible With	S18, D18, W18, S21, S22, S26, S27
Components	Z008
Unit Weight	0,020 KG



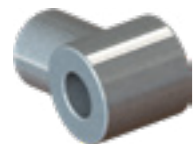
FEATURES Z300

Material Information	Zamac 5 alloy
Surface Treatment	Zinc plated
Compatible With	S18, D18, W18, S21, S22, S26, S27
Components	Z300
Unit Weight	0,028 KG

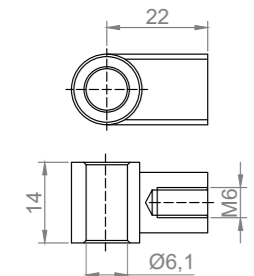


FEATURES Z301

Material Information	Zamac 5 alloy
Surface Treatment	Zinc plated
Compatible With	S22, S26, S27, S28
Components	Z301
Unit Weight	0,028 KG

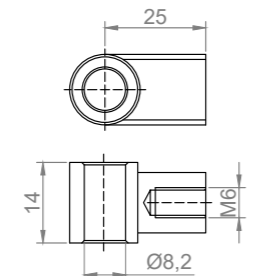


TYPE: ZT EYE CONNECTORS



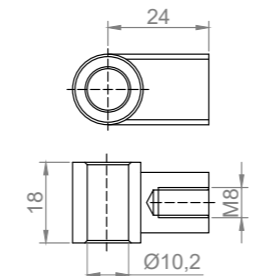
FEATURES Z112

Material Information	Zamac 5 alloy
Surface Treatment	Zinc plated
Compatible With	S15, D15, S18, D18, W18
Components	Z112
Unit Weight	0,035 KG



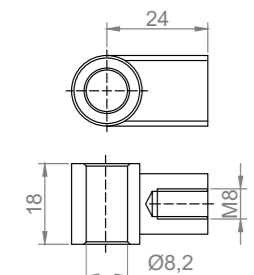
FEATURES Z119

Material Information	Zamac 5 alloy
Surface Treatment	Zinc plated
Compatible With	S15, D15, S18, D18, W18
Components	Z119
Unit Weight	0,040 KG



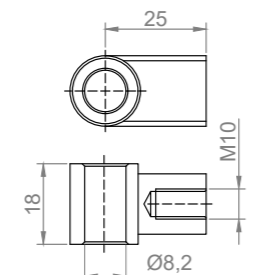
FEATURES Z1012

Material Information	Zamac 5 alloy
Surface Treatment	Zinc plated
Compatible With	S21, S22, S26, S27
Components	Z1012
Unit Weight	0,039 KG



FEATURES Z1014

Material Information	Zamac 5 alloy
Surface Treatment	Zinc plated
Compatible With	S21, S22, S26, S27
Components	Z1014
Unit Weight	0,039 KG

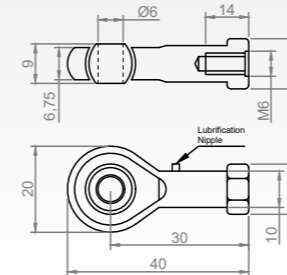


FEATURES Z1113

Material Information	Zamac 5 alloy
Surface Treatment	Zinc plated
Compatible With	S22, S26, S27, S28
Components	Z1113
Unit Weight	0,039 KG

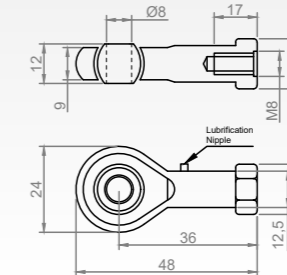


TYPE: MG SWIVEL CLEVIS



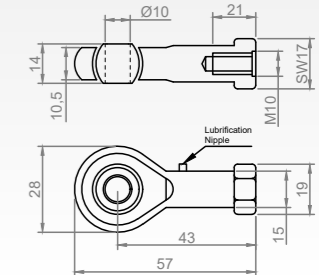
FEATURES MG53

Material Information	Steel, DIN 1.0718
Surface Treatment	Zinc Plated
Compatible With	S15, S18, D15, D18, W18
Components	MG53
Unit Weight	0,060 KG



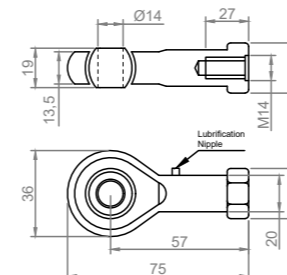
FEATURES MG54

Material Information	Steel, DIN 1.0718
Surface Treatment	Zinc Plated
Compatible With	S15, S18, D15, D18, W18
Components	MG54
Unit Weight	0,070 KG



FEATURES MG55

Material Information	Steel, DIN 1.0718
Surface Treatment	Zinc Plated
Compatible With	S21, S22, W22
Components	MG55
Unit Weight	0,090 KG



FEATURES MG56

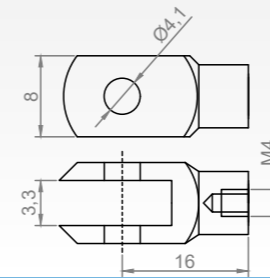
Material Information	Steel, DIN 1.0718
Surface Treatment	Zinc Plated
Compatible With	S21, S22, W22
Components	MG56
Unit Weight	0,120 KG



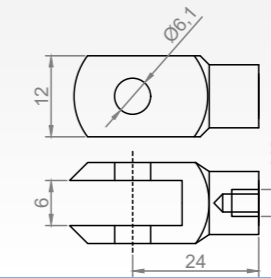
TYPE: FA FORK CONNECTORS

CLEVIS

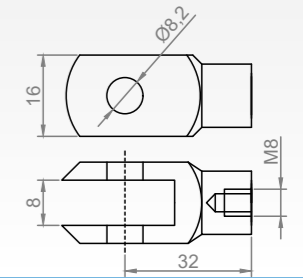
TGS Clevis Connectors are made from free cutting steel 11SMnPb30+C (DIN 1.0718) which is available with 4 surface treatments. Please check our T-INOX Catalogue for Stainless versions.



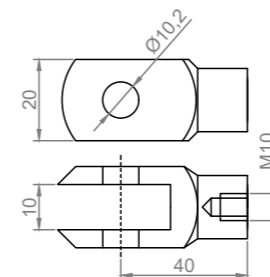
FEATURES	F020
Material Information	Steel, DIN 1.0718
Surface Treatment	Zinc plated
Compatible With	S12
Components	F020
Unit Weight	0,006 KG



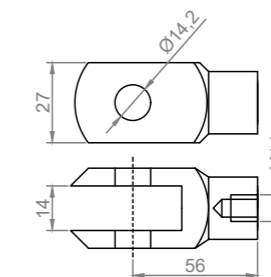
FEATURES	F001
Material Information	Steel, DIN 1.0718
Surface Treatment	Zinc plated
Compatible With	S15, S18
Components	F001
Unit Weight	0,008 KG



FEATURES	F005
Material Information	Steel, DIN 1.0718
Surface Treatment	Zinc plated
Compatible With	S21, S26, S28
Components	F005
Unit Weight	0,037 KG



FEATURES	F034
Material Information	Steel, DIN 1.0718
Surface Treatment	Zinc plated
Compatible With	S21, S22, S26, S32
Components	F034
Unit Weight	0,074 KG

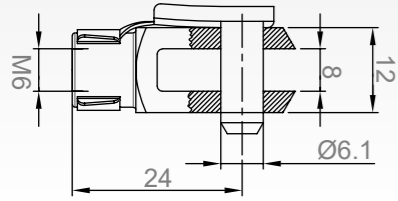


FEATURES	F141
Material Information	Steel, DIN 1.0718
Surface Treatment	Zinc plated
Compatible With	S40
Components	F141
Unit Weight	0,178 KG



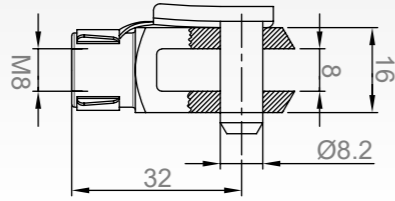


TYPE: FAC FORK CONNECTORS



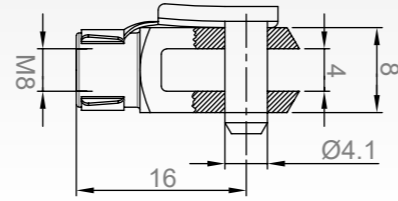
FEATURES **FC01**

Material Information	Steel ,DIN 1.0718
Surface Treatment	Zinc plated
Compatible With	S15, S18
Components	F001, CF05
Unit Weight	0,009 KG



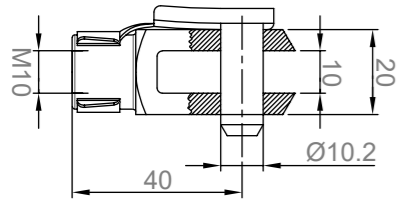
FEATURES **FC02**

Material Information	Steel ,DIN 1.0718
Surface Treatment	Zinc plated
Compatible With	S21, S26, S28
Components	F005, CF07
Unit Weight	0,047 KG



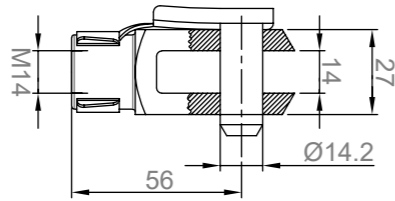
FEATURES **FC07**

Material Information	Steel ,DIN 1.0718
Surface Treatment	Zinc plated
Compatible With	S18, S21
Components	F020, CF01
Unit Weight	0,007 KG



FEATURES **FC10**

Material Information	Steel ,DIN 1.0718
Surface Treatment	Zinc plated
Compatible With	S21, S26, S28
Components	F034, CF09
Unit Weight	0,093 KG



FEATURES **FC12**

Material Information	Steel ,DIN 1.0718
Surface Treatment	Zinc plated
Compatible With	S40
Components	F141, CF13
Unit Weight	0,223 KG

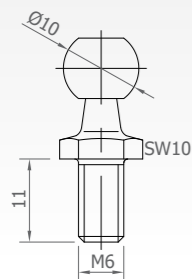
COMPONENTS

TGS Connector accessories are made from different type of steel with 4 different surface treatments. Please check our INOX Connectors catalogue for Stainless versions.



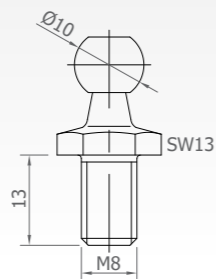


TYPE: PA BALL STUDS



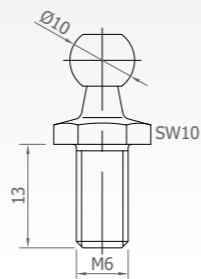
FEATURES PA01

Material Information	Steel ,DIN 1.0718
Surface Treatment	Zinc plated
Compatible With	B001, B002, B005
Unit Weight	0,009 KG



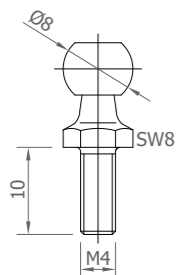
FEATURES PA03

Material Information	Steel ,DIN 1.0718
Surface Treatment	Zinc plated
Compatible With	B001, B002, B005
Unit Weight	0,012 KG



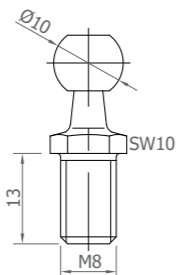
FEATURES PA14

Material Information	Steel ,DIN 1.0718
Surface Treatment	Zinc plated
Compatible With	B001, B002, B005
Unit Weight	0,009 KG



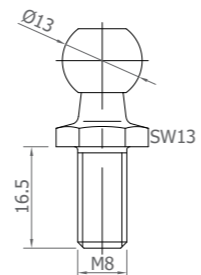
FEATURES PA42

Material Information	Steel ,DIN 1.0718
Surface Treatment	Zinc plated
Compatible With	B402
Unit Weight	0,002 KG



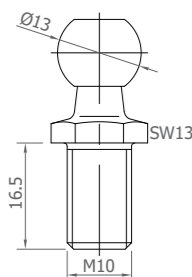
FEATURES PA45

Material Information	Steel ,DIN 1.0718
Surface Treatment	Zinc plated
Compatible With	B001, B002, B005
Unit Weight	0,010 KG



FEATURES PA54

Material Information	Steel ,DIN 1.0718
Surface Treatment	Zinc plated
Compatible With	B006, B007, B074
Unit Weight	0,017 KG

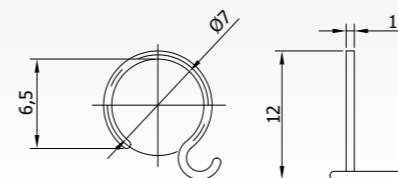


FEATURES PA55

Material Information	Steel ,DIN 1.0718
Surface Treatment	Zinc plated
Compatible With	B006, B007, B074
Unit Weight	0,021 KG

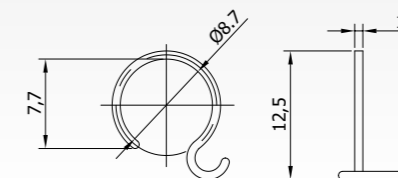


TYPE: DS SOCKET CLIPS



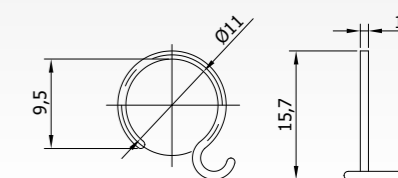
FEATURES DS08

Material Information	Steel ,DIN 1.0718
Surface Treatment	Zinc plated
Compatible With	B402
Unit Weight	0,00021 KG



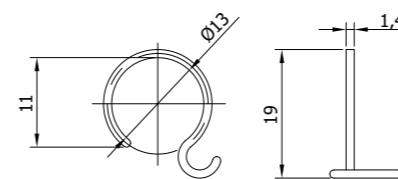
FEATURES DS10

Material Information	Steel ,DIN 1.0718
Surface Treatment	Zinc plated
Compatible With	B001, B002, B005
Unit Weight	0,00024 KG



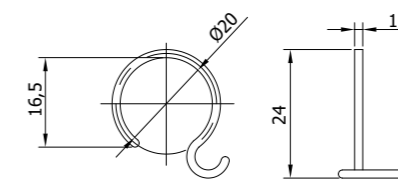
FEATURES DS13

Material Information	Steel ,DIN 1.0718
Surface Treatment	Zinc plated
Compatible With	B006, B007, B074
Unit Weight	0,00046 KG



FEATURES DS16

Material Information	Steel ,DIN 1.0718
Surface Treatment	Zinc plated
Compatible With	B125
Unit Weight	0,00077 KG

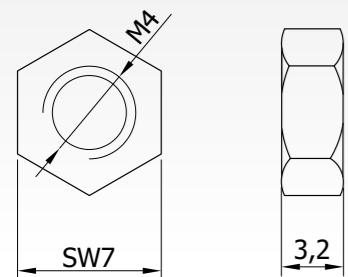


FEATURES DS19

Material Information	Steel ,DIN 1.0718
Surface Treatment	Zinc plated
Compatible With	B401
Unit Weight	0,0011 KG

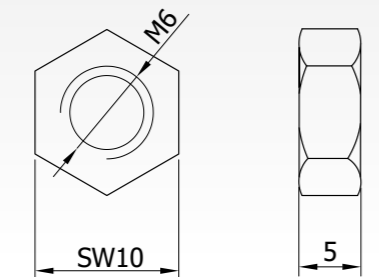


TYPE: N
NUT



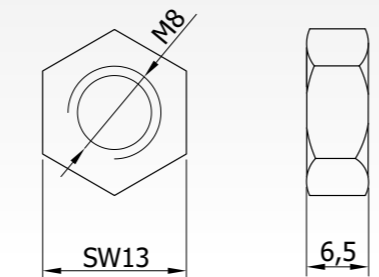
FEATURES **N02**

Material Information	Steel ,DIN 1.0718
Surface Treatment	Zinc plated
Compatible With	PA42
Unit Weight	0,00081 KG



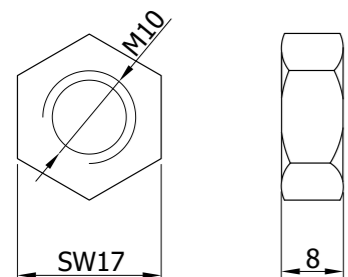
FEATURES **N04**

Material Information	Steel ,DIN 1.0718
Surface Treatment	Zinc plated
Compatible With	PA01, PA14
Unit Weight	0,0025 KG



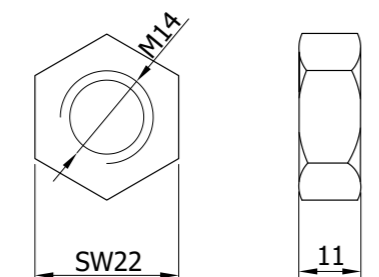
FEATURES **N05**

Material Information	Steel ,DIN 1.0718
Surface Treatment	Zinc plated
Compatible With	PA03, PA45, PA54
Unit Weight	0,0052 KG



FEATURES **N06**

Material Information	Steel ,DIN 1.0718
Surface Treatment	Zinc plated
Compatible With	PA55
Unit Weight	0,0116 KG

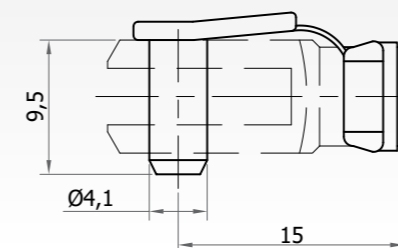


FEATURES **N08**

Material Information	Steel ,DIN 1.0718
Surface Treatment	Zinc plated
Compatible With	?
Unit Weight	0,025 KG

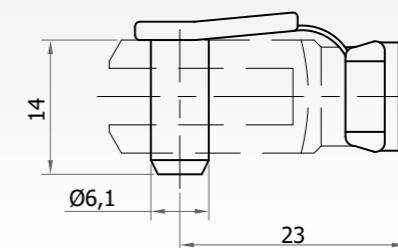


TYPE: CF
FORK CLIPS



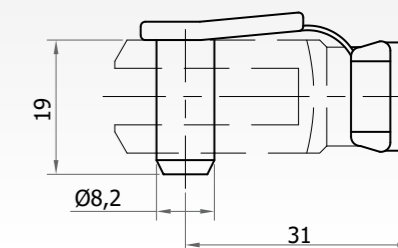
FEATURES **CF01**

Material Information	Steel ,DIN 1.0718
Surface Treatment	Zinc plated
Compatible With	F020
Unit Weight	0,002 KG



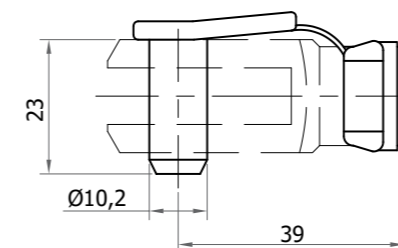
FEATURES **CF05**

Material Information	Steel ,DIN 1.0718
Surface Treatment	Zinc plated
Compatible With	F001
Unit Weight	0,005 KG



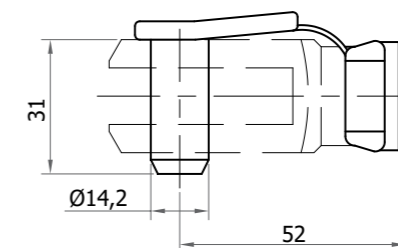
FEATURES **CF07**

Material Information	Steel ,DIN 1.0718
Surface Treatment	Zinc plated
Compatible With	F005
Unit Weight	0,011 KG



FEATURES **CF09**

Material Information	Steel ,DIN 1.0718
Surface Treatment	Zinc plated
Compatible With	F034
Unit Weight	0,019 KG



FEATURES **CF13**

Material Information	Steel ,DIN 1.0718
Surface Treatment	Zinc plated
Compatible With	F141
Unit Weight	0,045 KG

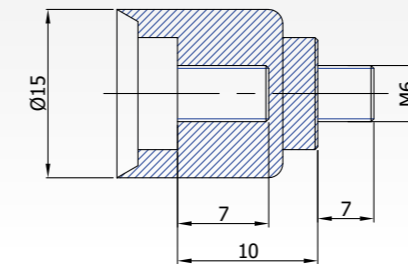


TYPE: MJ

M-JOINT

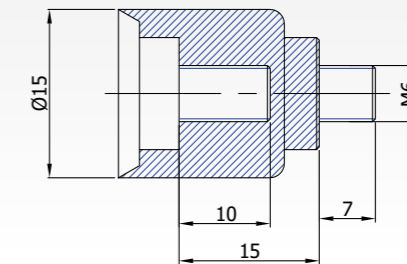
M-JOINT

TGS Clevis Connectors are made from free cutting steel 11SMnPb30+C (DIN 1.0718) which is available with 4 surface treatments. Please check our T-INOX Catalogue for Stainless versions.



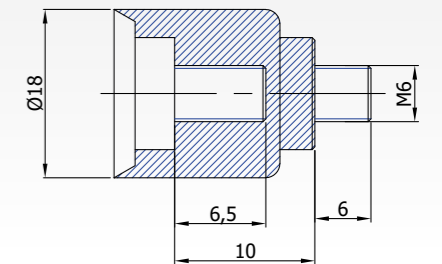
FEATURES MJ15-10

Material Information	Steel, DIN 1.0718
Surface Treatment	Zinc plated
Compatible With	S15
Unit Weight	0,009 KG



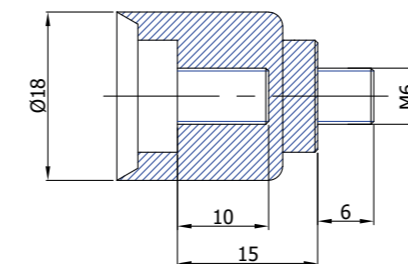
FEATURES MJ15-15

Material Information	Steel, DIN 1.0718
Surface Treatment	Zinc plated
Compatible With	S15
Unit Weight	0,009 KG



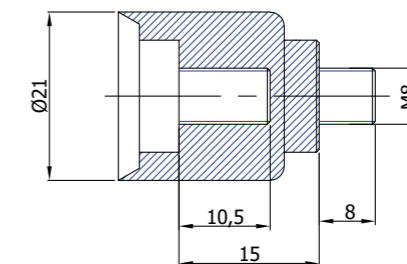
FEATURES MJ18-10

Material Information	Steel, DIN 1.0718
Surface Treatment	Zinc plated
Compatible With	S18
Unit Weight	0,009 KG



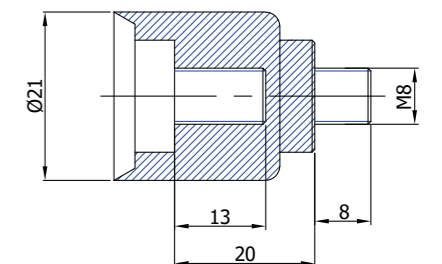
FEATURES MJ18-15

Material Information	Steel, DIN 1.0718
Surface Treatment	Zinc plated
Compatible With	S18
Unit Weight	0,009 KG



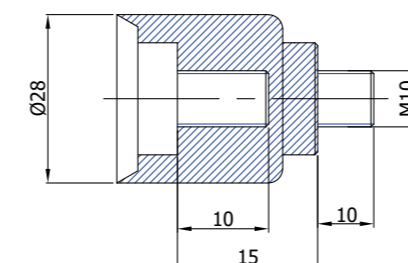
FEATURES MJ21-15

Material Information	Steel, DIN 1.0718
Surface Treatment	Zinc plated
Compatible With	S21
Unit Weight	0,009 KG



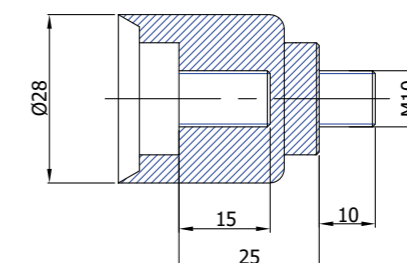
FEATURES MJ21-20

Material Information	Steel, DIN 1.0718
Surface Treatment	Zinc plated
Compatible With	S21
Unit Weight	0,009 KG



FEATURES MJ28-15

Material Information	Steel, DIN 1.0718
Surface Treatment	Zinc plated
Compatible With	S28
Unit Weight	0,009 KG



FEATURES MJ28-25

Material Information	Steel, DIN 1.0718
Surface Treatment	Zinc plated
Compatible With	S28
Unit Weight	0,009 KG

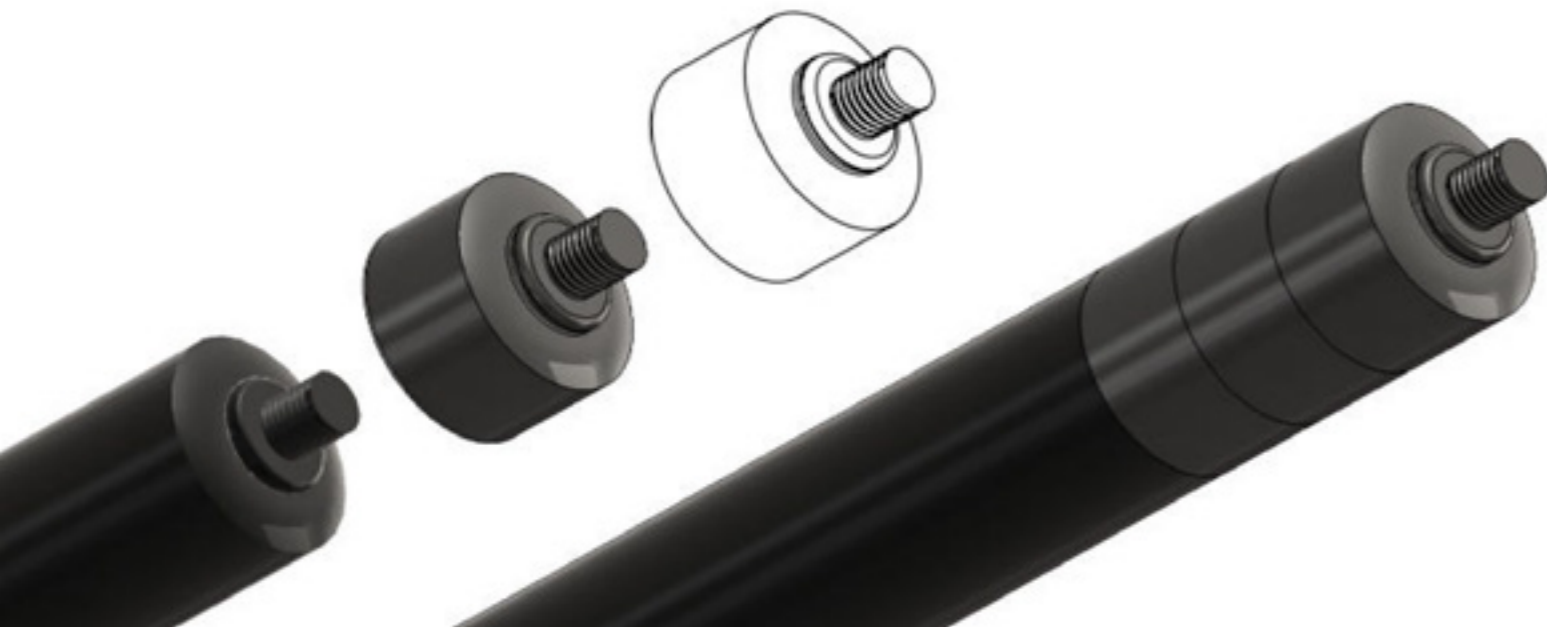




M-JOINT EXTENDERS FOR T-MOTION SERIES GAS SPRINGS

M-JOINT is original gas spring length extender which designed and patented by TGS. It has monoblock steel design, which gives original tube end shape with both side connection thread (male-female) accordingly.

M-JOINT designed to give more variety to standard range T-MOTION, T-BLOCK, T-INOX, T-TRACTION and T-CLICK gas springs. This simple part will help distributors and stock keepers to keep less variety with maximum opportunity.



TGS
TUNALIFT GAS SPRINGS

"Feel Safe!"
www.tunalift.com

Bursa, Turkey

+90 224 211 44 73

info@tunalift.com

www.tunalift.com